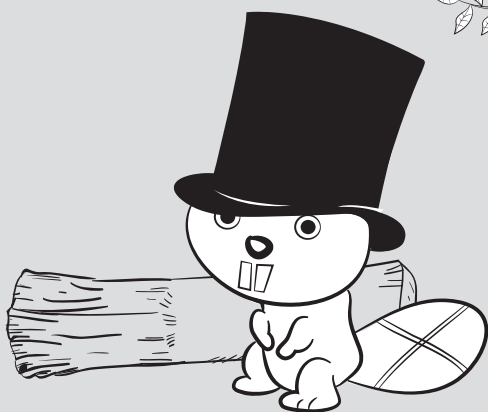
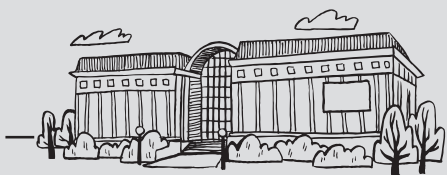




MINNESOTA HISTORICAL SOCIETY

EXPLORE the History Center



**then
now
wow**

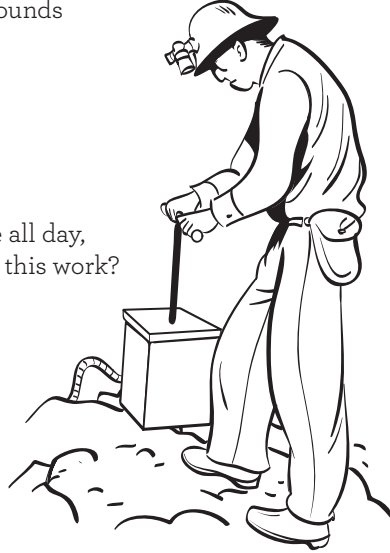
Then Now Wow

LISTEN — Head into the mine and notice the sounds.

What sounds do you hear?

What dangers do these sounds remind you of?

Think about working in a mine like this one all day, five or six days a week. Would you have liked this work? Why or why not?



DO — Find the bison puzzle,

near the sod house. Take the puzzle apart.

How was the bison like a grocery store and a hardware store for the Dakota people?

Now bring one of the bison parts to the electronic scanning system, on the wall nearby. Scan the tag. Which bison part do you have? How was it used by the Dakota?

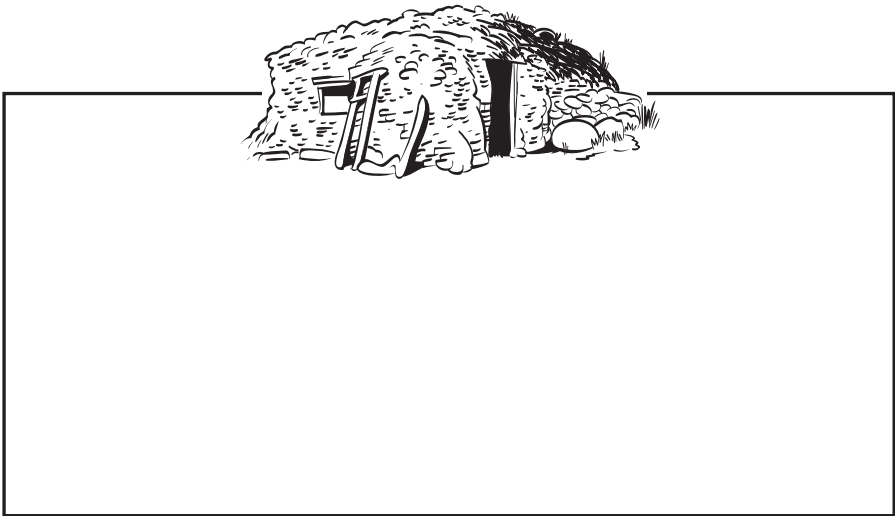
Scan a couple of other parts.

Which part do you think was the most important for the Dakota people's survival? Why?

DRAW — Enter the sod house in the corner of the gallery.
What do you notice about the walls on the inside of the sod house?

Why do you think people like Ole and Gro Rollag put these items on the walls of their sod house?

What if you had to move to Minnesota’s prairie in 1870? What would you bring with you? What would you put on the walls of your house? Draw the inside of your sod house below:



TALK — Look near the streetcar for the two cardboard boxes brought by the Blia Cha Thao family when they came to St. Paul from halfway across the world, in Laos. What happened in Laos that forced families like the Thao family to leave?

Imagine you had to pack your belongings and leave your home, never to return. What would you take with you? Discuss your ideas with the rest of your group.

HUNT — Find and watch the videos near the streetcar titled “Rondo Memories.” What are some stories that you can tell about where you are growing up?

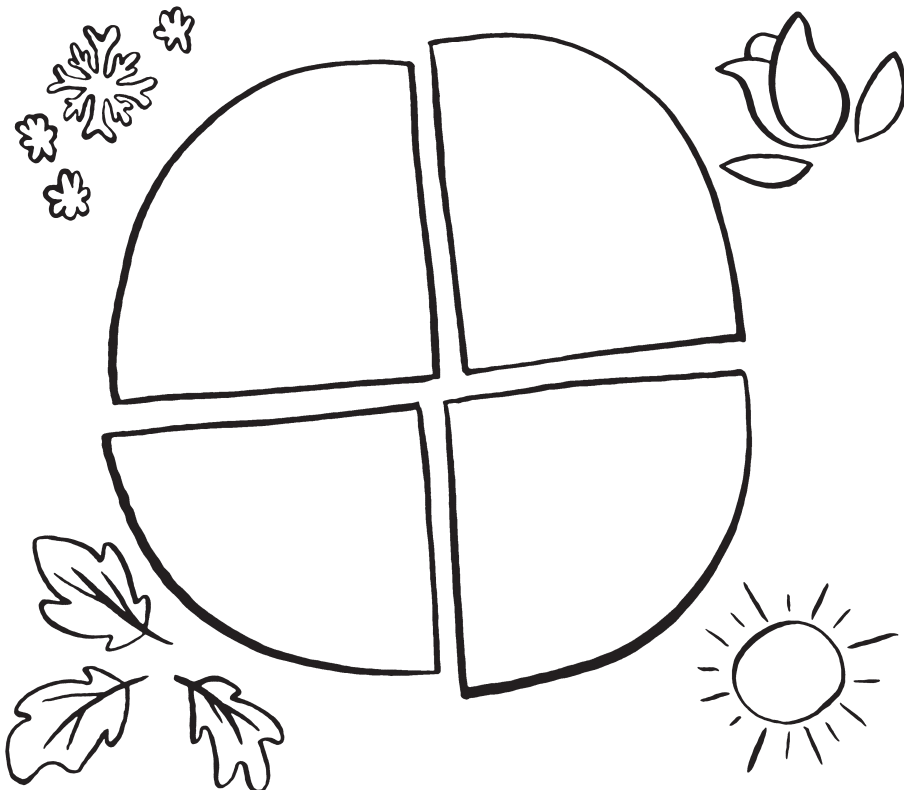
Weather Permitting

WATCH — Find the TV near the spear-fishing decoys at the entrance to the gallery. Watch the “Ice Fishing’s Frigid Charms” videos. Does ice fishing sound fun to you? What are some activities you like to do in the winter?

DO — Try on the boots near the entrance to the exhibit. Which boots do you think are the warmest? What winter activities might you do while wearing these boots?

DRAW — Find the Ojibwe moons or calendar. Look at the four pictures in the center. Why is keeping track of the seasons so important to the Ojibwe?

Draw what you like to do in each of the four seasons below.



Minnesota's Greatest Generation

HUNT — Find the “Life Seemed Grand” area at the front of the exhibit. Look at the toys from the 1930s in the cases. Which toy is your favorite? Why?

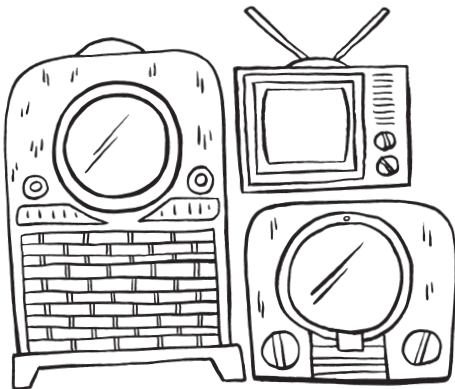
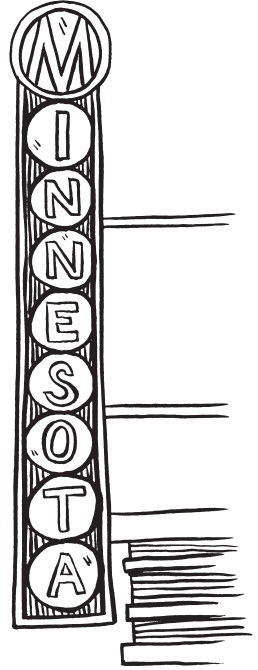
LISTEN — Enter the **Minnesota Theater** near the front of the exhibit. Watch the movie clips and listen closely to the music played with each of them. Describe the music you hear for these film clips:

Cartoon

Cowboy scene

Love scene

Why do you think the movie directors used different music in these clips? If you made a movie about your visit to the History Center today, what kind of music would be playing right now?



WATCH — Go to the **television showroom**. How have televisions changed from the 1950s to today?

What about the television is still the same?

Our Home

Native Minnesota

TALK - Find the big map of “Bdote” on the wall. Look very closely at it.

Two rivers come together at Bdote. One river has the same name as our state. What is the other river called on the map?

Bdote and Minnesota are special places for Dakota people. For many Dakota, Minnesota is their home and Bdote is the place the Dakota people began.

Think about a place that is special to you. Where is this place?

What about this place is important to you?

COMPUTE — Find the map that says “Ojibwe Migration” near the back wall and read the signs nearby.

What were the Ojibwe people looking for as they headed west?

In 1679, the Dakota and Ojibwe met near what is now Duluth. What did they talk about?

How long ago was their meeting? Do the math!

$$\begin{array}{r} 2022 \\ - 1679 \\ \hline = \end{array}$$

Have you ever moved?

Were you excited about your move?

Why or why not?

HUNT - Find the picture nearby of animals gathered at an Ojibwe camp.

Ojibwe communities are made up of different groups called clans. Each clan has a different animal to represent it.

Find and name all the different animals you can see. What are they?

Each clan does different kinds of work to help their Ojibwe community. The bear clan is important to Ojibwe communities in Minnesota.

What kind of work do you think someone in the bear clan might do?

Can you think of a job you or your family does to help your community?

DO – Follow the names on the floor to the map interactive.

Which names on the map do you recognize?

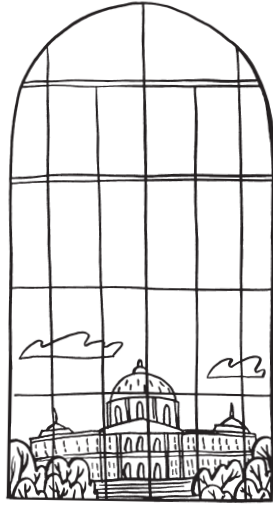
Now zoom into the map to see your community. Find an Ojibwe or Dakota place near your community. What is it called?

Around the History Center

TALK — Go out into the hallway near *Our Home: Native Minnesota*. Look outside the big window.
What building do you see?

Who works there?

Discuss with your classmates how many of you would like to work in a building like this.
Why or why not?



Your name: _____

Your school: _____

What did you learn that you'd want to learn MORE about?